

**Nu-Tiny-EVB
and
Nu-Link-Me Board
User's Manual
V1.0**



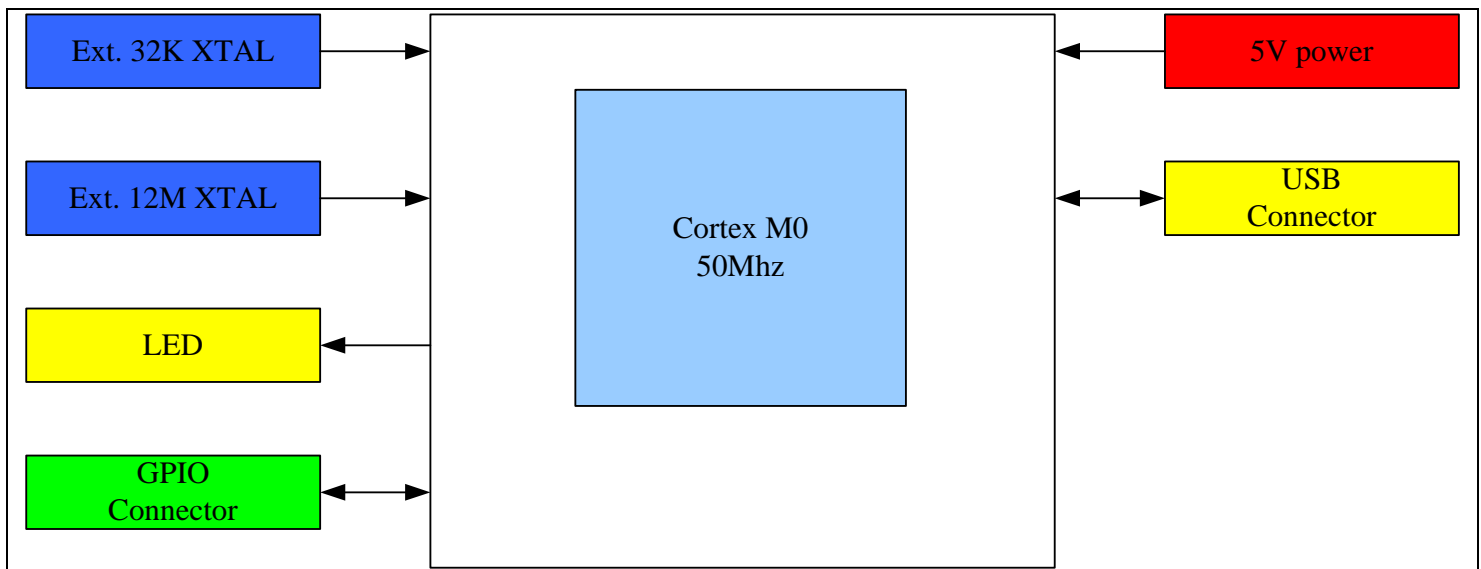
| | |
|----------------------------------|---|
| 1. OVERVIEW | 3 |
| 2. EVB BOARD BLOCK DIAGRAM | 3 |
| 3. PCB PLACEMENT | 4 |
| 4. SYSTEM CONFIGURATION | 5 |
| POWER ON SETTING | 5 |
| DEBUG SETTING..... | 5 |
| USB CONNECT..... | 5 |
| CHIP CONNECT | 5 |
| RESET BUTTON | 5 |
| POWER CONNECT | 5 |
| 5. SCHEMATIC | 6 |
| 6. REVISION HISTORY..... | 7 |

1. Overview

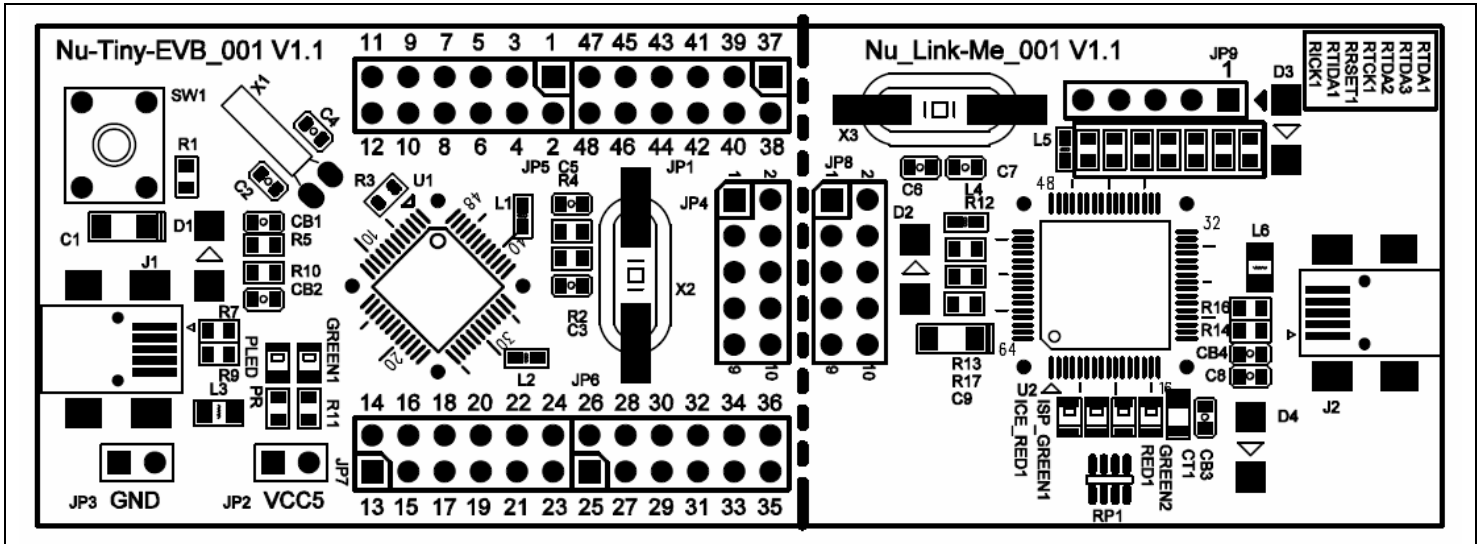
The NUC1XX series are ARM® Cortex™-M0 core embedded microcontroller for industrial control and the applications which needed Rich communication functions. The Cortex™-M0 is the newest ARM embedded processor with 32-bit performance and at a cost equivalent traditional 8-bit microcontroller.

The NUC1XX series with Cortex™-M0 core runs up to 50MHz, up to 32K/64K/128K-byte embedded flash, and 4K/8K/16K-byte embedded SRAM, it also integrates Timers, Watchdog Timer, RTC, PDMA, UART, SPI/SSP, I2C, PWM Timer, GPIO, LIN, CAN, USB 2.0 FS Device, 12-bit ADC, Analog Comparator, Low Voltage Detector and Brown-out detector.

2. EVB Board Block Diagram



3. PCB Placement



4. System Configuration

POWER ON Setting

J1: Nu-Tiny-EVB USB port
 J2: Nu-Link-Me USB port
 VCC5: Voltage connect

| POWER model | J1 | J2 | VCC5 | MCU Voltage |
|-------------|-------------------|-------------------|-------------------|----------------------|
| Model 1 | USB CONNECT to PC | OFF | DC 5V output | DC 5V |
| Model 2 | OFF | USB CONNECT to PC | DC 5V output | DC 5V |
| Model 3 | OFF | OFF | DC 2.8-5.5V input | Voltage by VCC input |

Debug Setting

JP4: Target Nuvoton ICE Connector
 JP8: Nuvoton ICE Connector

USB Connect

J1: mini USB Connect (Nu-Tiny-EVB)

Chip Connect

JP1, JP5, JP6, JP7: Chip pads connect

Reset Button

SW1: Reset button

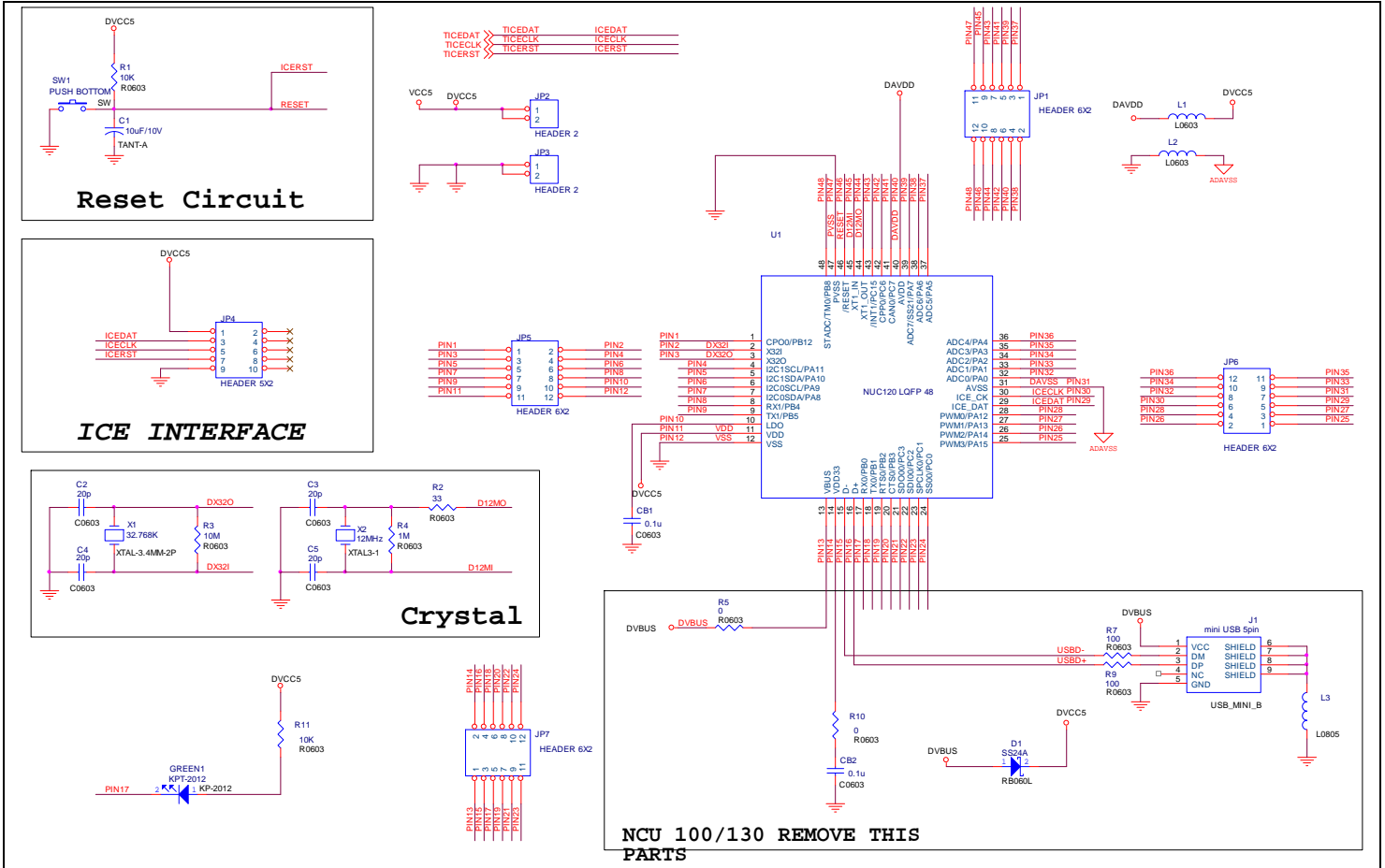
Power Connect

JP2: VCC connect
 JP3: GND connect

Nu-Tiny-EVB and Nu-Link-Me Board



5. Schematic



The above information is the exclusive intellectual property of Nuvoton Technology and shall not be disclosed, distributed or reproduced without permission from Nuvoton

4/21/2010

- 6 -

Version: 1.0

6. Revision history

| version | date | page | description |
|---------|--------------|------|----------------|
| 1.0 | Jan 22, 2010 | -- | Initial Issued |